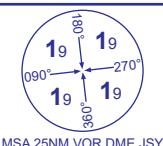


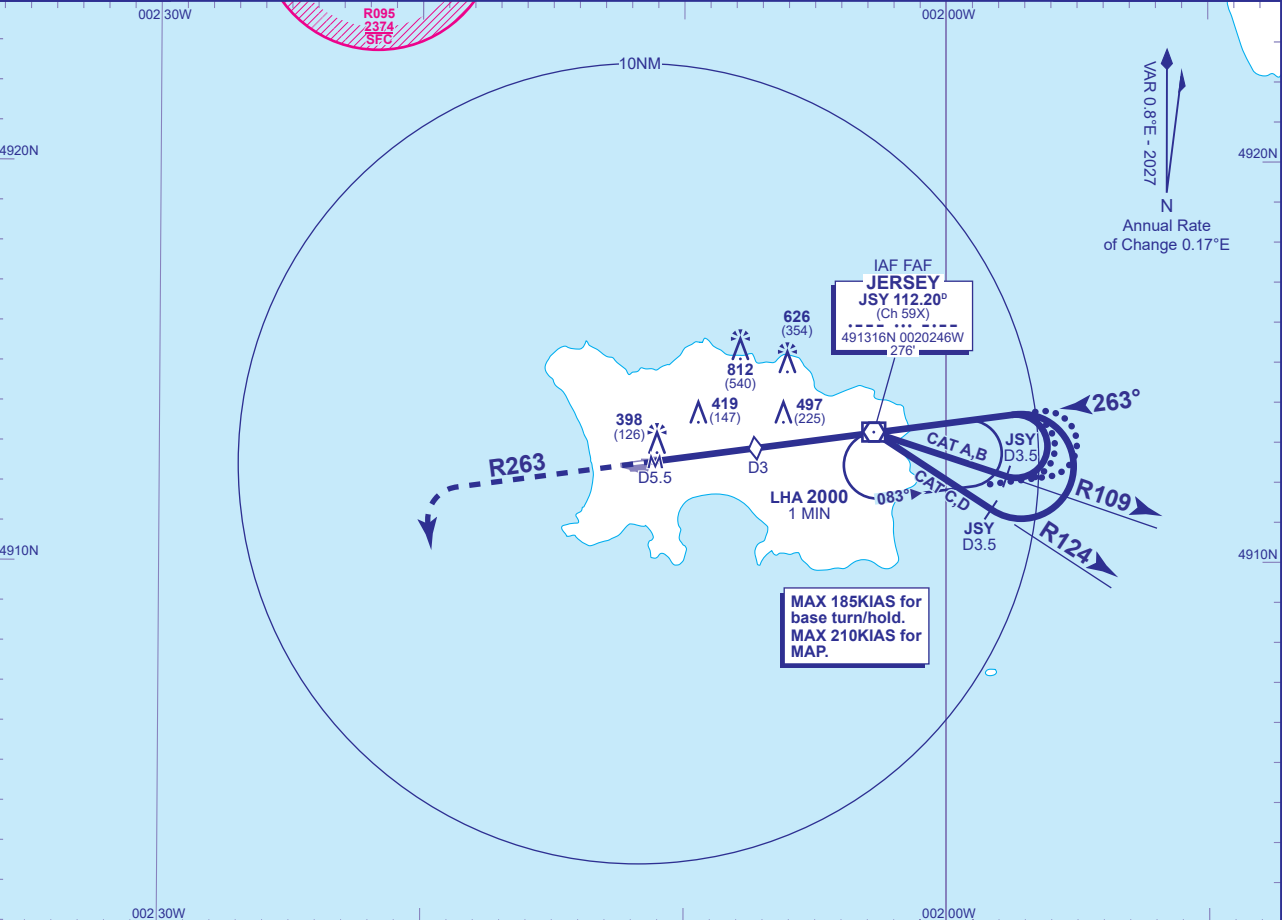
INSTRUMENT APPROACH CHART - ICAO

JERSEY
VOR/DME
RWY 26
(ACFT CAT A,B,C,D)



ATC	125.205, 120.455	JERSEY CONTROL	AD ELEVATION	277
APP	120.305, 118.555	JERSEY APPROACH	THR ELEVATION	272
TWR	119.455	JERSEY TOWER	OBSTACLE ELEVATION 812 AMSL (540) (ABOVE THR)	
	121.905	JERSEY GROUND		
ATIS	134.680	JERSEY INFORMATION	BEARINGS ARE MAGNETIC	

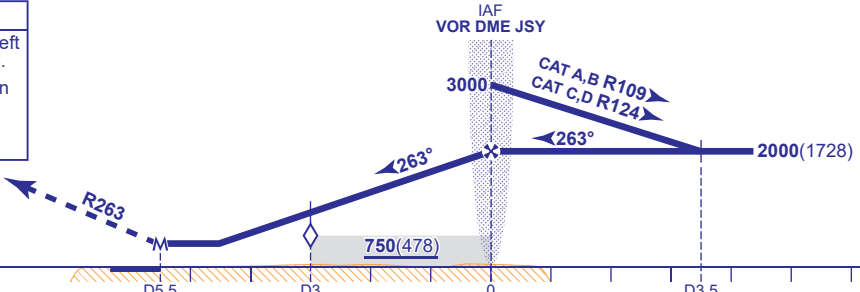
TRANSITION ALTITUDE
5000



RECOMMENDED PROFILE Gradient 5.2%, 316FT/NM

DME JSY(to THR)	1(4.5)	2(3.5)	3(2.5) (SDF)	4(1.5)
ALT(HGT)	1750(1478)	1430(1158)	1110(838)	800(528)

MAPt JSY DME 5.5 (THR RWY 26)
Climb straight ahead to **3000**, then turn left heading **180°M**, then as directed by ATC.
RCF: Proceed as above, and continue on heading **180°M**, 2 minutes after initiating missed approach, turn left direct to **VOR JSY** to join the hold at **3000**.



Aircraft Category		A	B	C	D	Rate of descent	G/S KT	160	140	120	100	80
OCA (OCH)	WITH DME	680(408)	680(408)	680(408)	680(408)		FT/MIN	840	740	630	530	420
	NO DME	750(478)	750(478)	750(478)	750(478)	JSY to MAPt	MIN:SEC	2:03	2:21	2:45	3:18	4:07
VM(C)OCA (OCH AAL)	Total Area	770(493)	770(493)	1210(933)	1210(933)							
	South of RWY 08/26	770(493)	770(493)	1030(753)	1030(753)							

ALTERNATIVE PROCEDURE EXTENDED HOLDING PATTERN (MAX 185KIAS)
From overhead IAF VOR JSY at **3000**. Extend the outbound leg of the holding pattern descending to **2000(1728)**. At JSY D4 (CAT A,B); JSY D4.5 (CAT C,D) turn left onto the FAT, when established, continue as for main procedure.

AIRCRAFT UNABLE TO RECEIVE DME JSY
MAIN PROCEDURE: Fly outbound for 1.5MIN (CAT A,B); 1MIN (CAT C,D) prior to base turn.
ALTERNATIVE PROCEDURE: Extend outbound leg for 1.5MIN prior to base turn descending to **2000(1728)**. When established continue as for main procedure.

CHANGE (2/26): JERSEY CONTROL (SECONDARY) FREQUENCY.